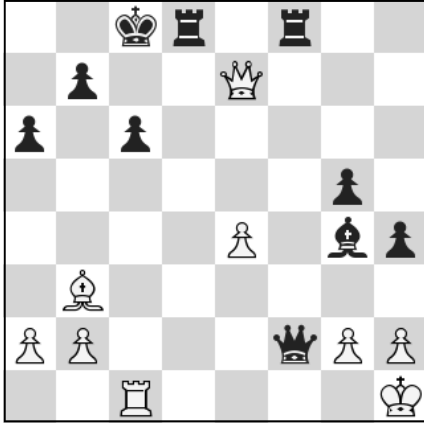


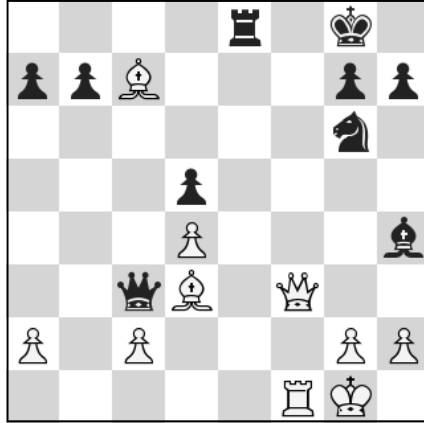
# WEAK BACK RANK – Easy 1



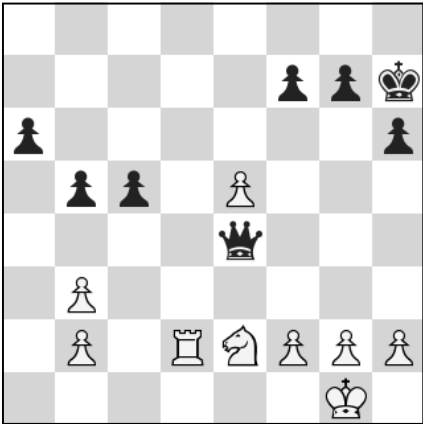
1) White to Move



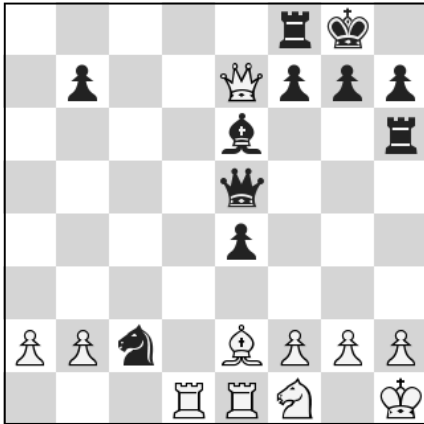
4) Black to Move



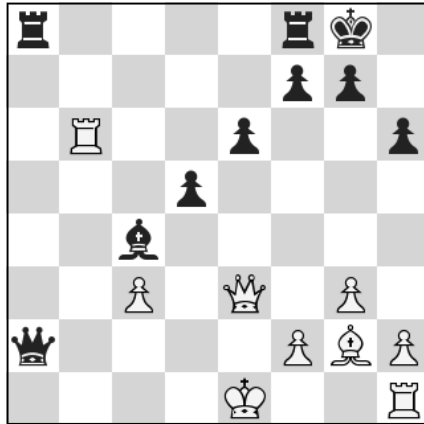
7) White to Move



2) Black to Move



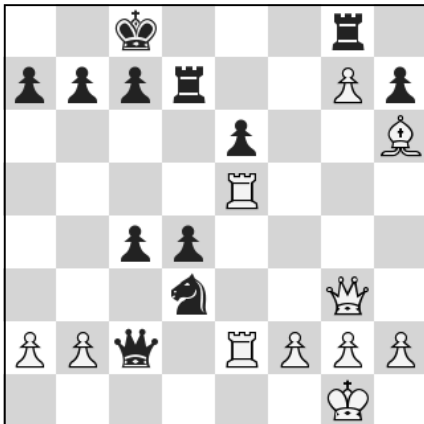
5) White to Move



8) Black to Move



3) White to Move



6) Black to Move



9) White to Move

1) 1. Rd8+

4) 1 ... Qf1+! 2. Rxf1 Rxf1#

7) 1. Qf7+ Kh8 2. Qxe8+ Nf8 3. Qxf8#

2) 1 ... Qb1+

5) 1. Rd8!

8) 1 ... Qa1+ 2. Kd2 Ra2+ 3. Rb2  
Rxb2#

3) 1. Qd8+ Ne8 2. Qxe8#

6) 1 ... Qd1+ 2. Re1 Nxe1

9) 1. Qxe8+! Kxe8 2. Rg8#